

System Features

Basic Unit

- Compact, comprehensive, sturdy design
- Complete instrumentation for experimentation of I.C. Engine performance.
- Direct reading of parameters like fuel consumption, air flow, temperature and RPM etc.
- Demonstration of performance of I.C. Engine at different load.
- Fault Trainer as optional attachments.

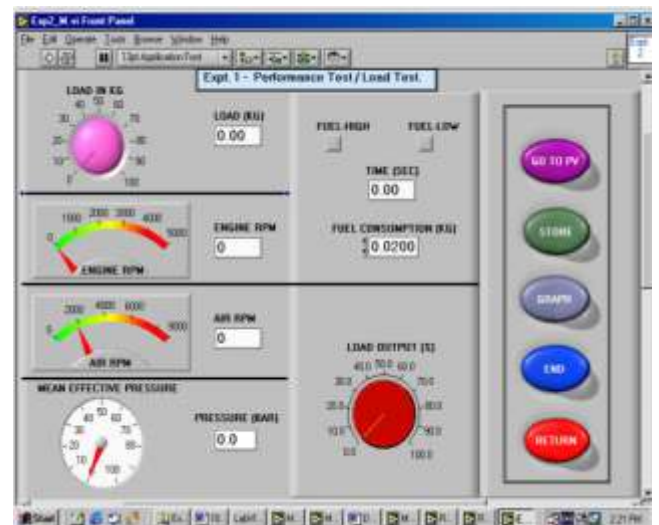
Computerization Unit

- Data Acquisition with high performance, various function parameter IP & OP.
- Low cost, Portable, compact comprehensive design
- Complete instrumentation for reading different parameters & calculations of Engine Performance.
- Very high -speed dynamic signal acquisition is possible.
- Computerized Load or speed control attachment as optional accessories.

System Description

Basic Unit

Study of performance of internal combustion engines & its calculation is important feature of this trainer. System is having unique feature of calculating all efficiency of internal combustion engine including



heat balance sheet. The Engine & Dynamometer is mounted on base structure. Sci-tech Engineers have design the system in such fashion that easily operate; demonstrated & requisite experimentation can be performed. System has facility of measuring Engine brake load, speed, consumption of air, consumption of fuel, temperature at different locations, mass flow of water.

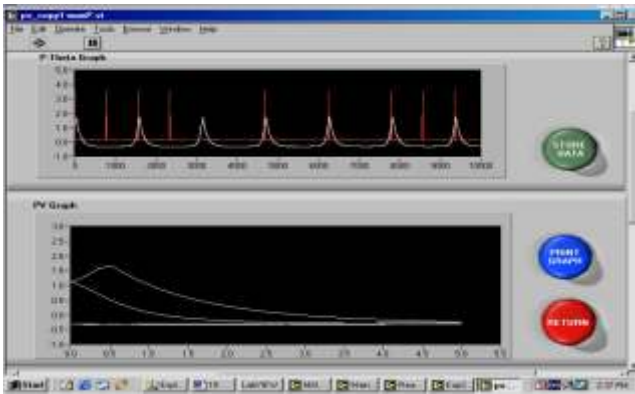
Computerization Unit

System is having unique feature of direct reading &

Note: Specifications are subject to change.

Tesca Technologies Pvt. Ltd.

IT-2013, Ramchandrapura Industrial Area, Sitapura Extension,
 Near Bombay Hospital, Vidhani Circle, Jaipur-302022, Rajasthan, India,
 Tel: +91-141-2771791 / 2771792; Email: info@tesca.in, tesca.technologies@gmail.com
 Website: www.tescaglobal.com




automatic calculating all efficiency & heat balance sheet of internal combustion engine. The online graphical representation of important parameter is displayed on screen to see effect of change in load or speed. Final result & graph are in built available in software. System has facility of measuring Engine brake load, speed, consumption of air, consumption of fuel, temperature at different locations, mass flow of water.

P-q / P-V Arrangement Console

System is having unique feature of direct Engine Dynamic Pressure & Engine crank angle q or Engine Volume (V) can be measured & plot on computer screen. It gives on line representation of Engine Dynamic Pressure & Engine crank angle q to study effect of change in load & speed. For correct sensing of Pressure, piezo quartz type transducer from PCB USA or same quality is used.

Computer Controlled Unit

System is having unique feature of direct control of Engine load or speed from keyboard & mouse. This system is having automatic operation controller & actuator. This can control parameter on line of engine operation.



| Observation Table 1 | | | | | |
|---------------------|-----------|--------------------|----------------------------|---|-------------------------------|
| Sr. No. | LOAD (Kg) | Engine Speed (RPM) | Fuel Consumption (Kg./Sec) | Water Flow at Inlet of Calorimeter (L./Sec) | Flow of Outlet Water (L./Sec) |
| 1 | 5.04 | 0 | inf | 0.03 | 0.00 |
| 1 | 5.06 | 0 | inf | 0.03 | 0.00 |

| Observation Table 2 | | | | | | |
|---------------------|---------------------|----------------------|---------------------------|----------------------------|----------------------|-----------------------|
| Sr. No. | Exhaust Gas In (°C) | Exhaust Gas Out (°C) | Calorimeter Water In (°C) | Calorimeter Water Out (°C) | Engine Water In (°C) | Engine Water Out (°C) |
| 1 | 1295.0 | 1295.0 | 349.5 | 262.0 | 574.4 | 579.1 |
| 1 | 1295.0 | 1295.0 | 1137.0 | 402.2 | 704.0 | 681.1 |

Note: Specifications are subject to change.

Tesca Technologies Pvt. Ltd.

IT-2013, Ramchandrapura Industrial Area, Sitapura Extension,
 Near Bombay Hospital, Vidhani Circle, Jaipur-302022, Rajasthan, India,
 Tel: +91-141-2771791 / 2771792; Email: info@tesca.in, tesca.technologies@gmail.com
 Website: www.tescaglobal.com

List of Experiments

- Calculation of Mechanical Efficiency & Plot brake power versus mechanical efficiency.
- Measurement & Calculation of Volumetric efficiency.
- Measurement & calculation of specific fuel consumption
- Measurement & calculation of brake thermal efficiency
- Determining air / fuel ratios
- Heat Balance Test
- Brake Mean Effective Pressure and brake power on the basis of engine speed
- Plotting of exhaust temperature versus Speed
- Study of Engine Dynamic Pressure & Crank Angle . (If P - V Arrangement Console is optional ordered)
- Calculation of Indicated Mean Effective Pressure. (If P - V Arrangement Console is optional ordered)
- Computer controlled of parameter like load or Engine speed. (If Computer controlled Unit is optional ordered.)

Operation & Maintenance Manual

- Self-explanatory operating & maintenance manual will be provided. This will include Theory, operating procedure, standard results, and maintenance procedures.

System Components

Basic Unit

- Engine: Multi-cylinder Petrol or Diesel Engine
 - Four Cylinder Four Stroke MPFI Petrol Engine: 1405 cc, Max. Power 55 kW @ 5500 RPM
 - Dynamometer suitable for above mentioned Engine. (Choose any one from List motioned below)
 - Hydraulic Dynamometer (Capacity: Up to 37 kW @ 3000 RPM)
 - Eddy current Dynamometer (Capacity: 10 KW, 20KW, 30 KW, 80KW, 150KW)
 - Calorimeter- Shell & Tube type heat exchanger will be used. Water-cooled.
 - Air Box – MS powder coated / PVC air box with orifice meter will be used.
 - Fuel Tank: capacity 5 liters.
 - Base frame – Made up of mild steel C channel duly powder coated.
 - Control Panel - for mounting of all indicators.
 - Digital Temp. Indicator with temperature sensor – 6 channel 0-400°C (Optional)
 - Rotameter: 600 LPH for calorimeter water flow measurement.
 - Electrical switches, wiring & Piping
- #### P-q, P- V Arrangement Console (Optional)
- Engine cylinder pressure.
 - Piston position marker.



Order Code - 32715
Computerized IC Engine Test Rigs: Four Cylinder |
Four Stroke MPFI Petrol Engine: 1405 cc

Optional Accessories

- Multi Engine Mounting Test Bed.
- Different type of Engines.
- Computer Based Training Software.
- Cut Section Models
- Computer
- Fault Trainer
- Computerization by using Multi Function Recorder Unit with different digital signals & RS232 Output.
- Cooling water flow transmitter

Service Required at Site

- Electric Supply 230V 50Hz. With proper earthing.
- Tap Water supply & drainage.
- Water circulation at ambient temperature or cooling tower @ 100LPH
- Exhaust chimney
- Concrete foundation.

Note: Specifications are subject to change.

Tesca Technologies Pvt. Ltd.

IT-2013, Ramchandrapura Industrial Area, Sitapura Extension,
Near Bombay Hospital, Vidhani Circle, Jaipur-302022, Rajasthan, India,
Tel: +91-141-2771791 / 2771792; Email: info@tesca.in, tesca.technologies@gmail.com
Website: www.tescaglobal.com

