



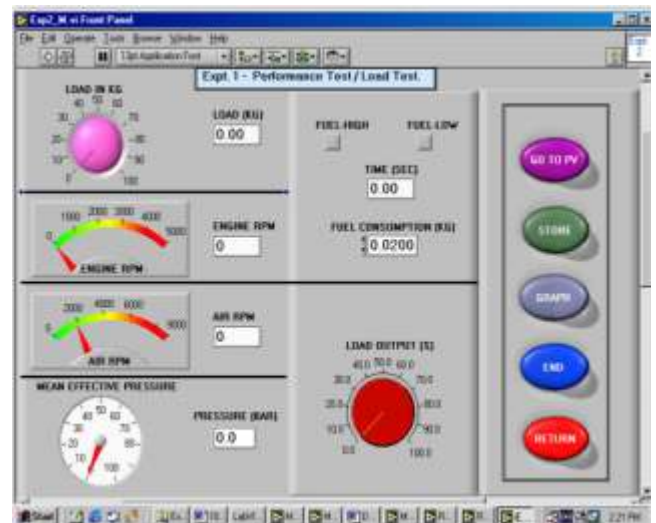
SYSTEM FEATURES

BASIC UNIT

- Compact, comprehensive, sturdy design
- Complete instrumentation for experimentation of I.C. Engine performance.
- Direct reading of parameters like fuel consumption, air flow, temperature and RPM etc.
- Demonstration of performance of I.C. Engine at different load.
- Fault Trainer as optional attachments.

COMPUTERIZATION UNIT

- Data Acquisition with high performance, various function parameter IP & OP.
- Low cost, Portable, compact comprehensive design
- Complete instrumentation for reading different parameters & calculations of Engine Performance.
- Very high -speed dynamic signal acquisition is possible.
- Computerized Load or speed control attachment as optional accessories.



SYSTEM DESCRIPTION

BASIC UNIT

- Study of performance of internal combustion engines & its calculation is important feature of this trainer. System is having unique feature of calculating all efficiency of internal combustion engine including heat balance sheet. The Engine & Dynamometer is mounted on base structure. Sci-tech Engineers have design the system in such faction that easily operate; demonstrated & requisite experimentation can be performed. System has facility of measuring Engine brake load, speed, consumption of air, consumption of

Note: Specifications are subject to change.

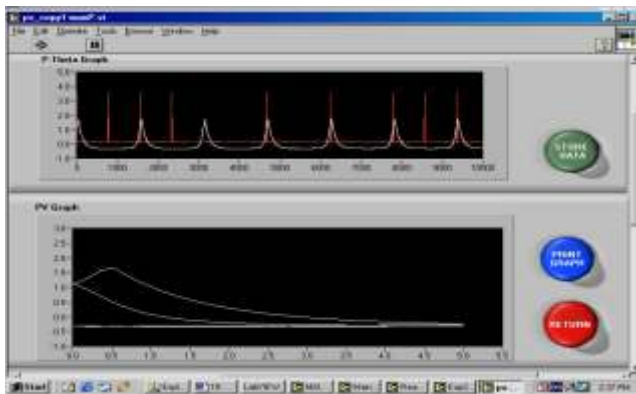
Tesca Technologies Pvt. Ltd.

IT-2013, Ramchandrapura Industrial Area, Sitapura Extension,
 Near Bombay Hospital, Vidhani Circle, Jaipur-302022, Rajasthan, India,
 Tel: +91-141-2771791 / 2771792; Email: info@tesca.in, tesca.technologies@gmail.com
 Website: www.tescaglobal.com

fuel, temperature at different locations, mass flow of water.

Computerization Unit

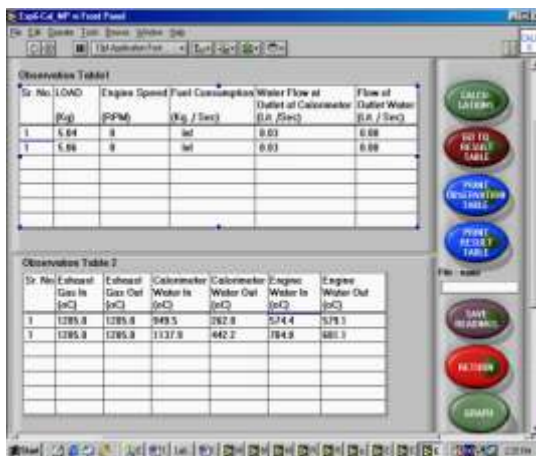
System is having unique feature of direct reading & automatic calculating all efficiency & heat balance sheet of internal combustion engine. The online graphical representation of important parameter is displayed on screen to see effect of change in load or speed. Final result & graph are in built available in software. System has facility of measuring Engine brake load, speed, consumption of air, consumption of fuel, temperature at different locations, mass flow of water.



P- q / P-V Arrangement Console

System is having unique feature of direct Engine Dynamic Pressure & Engine crank angle q or Engine Volume (V) can be measured & plot on computer screen. It gives on line representation of Engine Dynamic Pressure & Engine crank angle q to study effect of change in load & speed. For correct sensing of Pressure, piezo quartz type transducer from PCB USA or same quality is used.

Computer Controlled Unit



Note: Specifications are subject to change.

Tesca Technologies Pvt. Ltd.

IT-2013, Ramchandrapura Industrial Area, Sitapura Extension,
 Near Bombay Hospital, Vidhani Circle, Jaipur-302022, Rajasthan, India,
 Tel: +91-141-2771791 / 2771792; Email: info@tesca.in, tesca.technologies@gmail.com
 Website: www.tescaglobal.com

System is having unique feature of direct control of Engine load or speed from keyboard & mouse. This system is having automatic operation controller & actuator. This can control parameter on line of engine operation.

List of Experiments

- Calculation of Mechanical Efficiency & Plot brake power versus mechanical efficiency.
- Measurement & Calculation of Volumetric efficiency.
- Measurement & calculation of specific fuel consumption
- Measurement & calculation of brake thermal efficiency
- Determining air / fuel ratios
- Heat Balance Test
- Brake Mean Effective Pressure and brake power on the basis of engine speed
- Plotting of exhaust temperature versus Speed
- Study of Engine Dynamic Pressure & Crank Angle . (If P - V Arrangement Console is optional ordered)
- Calculation of Indicated Mean Effective Pressure. (If P - V Arrangement Console is optional ordered)
- Computer controlled of parameter like load or Engine speed. (If Computer controlled Unit is optional ordered.)

Operation & Maintenance Manual

- Self-explanatory operating & maintenance manual will be provided. This will include Theory, operating procedure, standard results, and maintenance procedures.

System Components

BASIC UNIT

- Engine: Multi-cylinder Petrol or Diesel Engine
- Four Cylinder Four Stroke Diesel Engine: 1405 cc, Max. Power 39kW @ 5000 RPM
- Dynamometer suitable for above mentioned Engine. (Choose any one from List motioned below)
- Hydraulic Dynamometer (Capacity: Up to 37 kW @ 3000 RPM)
- Eddy current Dynamometer (Capacity: 10 KW, 20KW, 30 KW, 80KW, 150KW)
- Calorimeter- Shell & Tube type heat exchanger will be used. Water-cooled.
- Air Box – MS powder coated / PVC air box with orifice meter will be used.
- Fuel Tank: capacity 5 liters.
- Base frame – Made up of mild steel C channel duly powder coated.
- Control Panel – for mounting of all indicators.
- Digital Temp. Indicator with temperature sensor – 6 channel 0-400°C (Optional)
- Rotameter: 600 LPH for calorimeter water flow

measurement.

- Electrical switches, wiring & Piping

P-q, P- V Arrangement Console (Optional)

- Engine cylinder pressure.
- Piston position marker.

Optional Accessories

- Multi Engine Mounting Test Bed.
- Different type of Engines.
- Computer Based Training Software.
- Cut Section Models
- Computer
- Fault Trainer
- Computerization by using Multi Function Recorder Unit with different digital signals & RS232 Output.
- Cooling water flow transmitter

Service Required at Site

- Electric Supply 230V 50Hz. With proper earthing.
- Tap Water supply & drainage.
- Water circulation at ambient temperature or cooling tower @ 100LPH
- Exhaust chimney
- Concrete foundation.

Note: Specifications are subject to change.

Tesca Technologies Pvt. Ltd.

IT-2013, Ramchandrapura Industrial Area, Sitapura Extension,
Near Bombay Hospital, Vidhani Circle, Jaipur-302022, Rajasthan, India,
Tel: +91-141-2771791 / 2771792; Email: info@tesca.in, tesca.technologies@gmail.com
Website: www.tescaglobal.com

