



Features

- Computerized operation
- Closed loop water circulation
- Compact, self-contained
- Non-corrosive wetted parts
- Instruction & operation manual- soft copy as well as hard copy

Experiments

- Study of level control Open loop, On-Off, P, PI, PD, PID Tuning by open & closed loop Stability analysis
- Study of second order interacting
- Study of second order Non interacting
- Study of cascade control
- Study of quadruple tank control

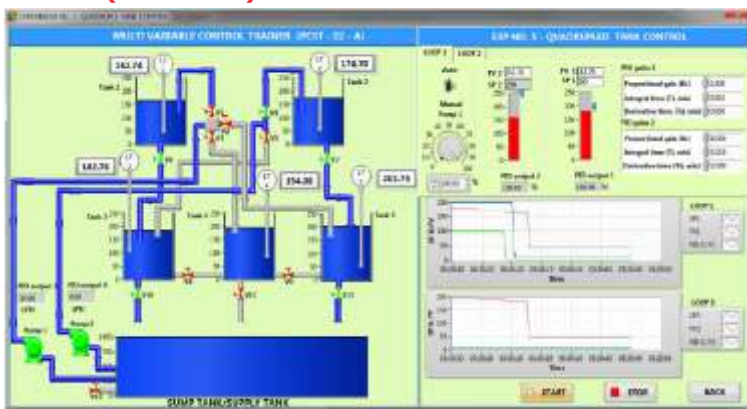
Services Required

- Electric supply: 1 ϕ 230 V AC, 50 Hz.

Technical Specification

No.	Item Name	Technical Specifications
1	SCADA Application	Type: Runtime - Make: Labview/Eclipse/Equv.
2	DAQ Device	Make: NI USB-6001/Equv. Analog input 4, Analog output 2, Digital input-2 , Digital output -2
3	Level Transmitter	05 Nos., Type Electronic, Two wire, Range 0-250mm, Output 4-20mA
4	Dosing Pump	02 Nos., Positive displacement dosing pump with adjustable stroke, Supply : 230VAC, 10LPH; I/P Signal: 4-20 mA DC
5	Process tank	05 Nos., Transparent, Acrylic with 0-100% graduated scale Height: 300 mm, Diameter: 150 mm, Thickness: 3 mm
6	Supply Tank	Material: SS303, Dimension: 46cm x 30cm x 30cm
7	Signal Isolator	a) Current to Voltage Converters - 5 Nos. 230V AC, I/P: 4 to 20 mA, O/P: 0 to 10 V b) Voltage to Current - 2 Nos.; 230V AC, I/P: 0 to 10 V, O/P: 4 to 20 mA

SCADA (LABVIEW) Screen:



Note: Specifications are subject to change.

Tesca Technologies Pvt. Ltd.

IT-2013, Ramchandrapura Industrial Area, Sitapura Extension,
Near Bombay Hospital, Vidhani Circle, Jaipur-302022, Rajasthan, India,
Tel: +91-141-2771791 / 2771792; Email: info@tesca.in, tesca.technologies@gmail.com
Website: www.tescaglobal.com