

Nano 58014 is a conventional laboratory equipment, not only widely used in molecular biological experiments, such as DNA, RNA, protein detection, but also used in absorbance detection for the general substance analysis. It includes three common detections to the nucleic acids, nucleic acid markers and proteins.

The variable path length of Nano Ready realizes both the minimum sample volume detection as low as 0.5pL, suitable for precious samples, and the detection to the high concentration samples without dilution at all. Including the liquid drop, it builds in the standard cuvette detection module for more use.



Order Code - 58014

FEATURES

High sensitivity

2028 linear CCD detection unit, new generation product, has higher sensitivity, accuracy as well as repeatability.

Stability for the long life

Long-life xenon flash lamp of Hamamastu ensures stability of detection and the long life of instrument. The lifting detection base with sliding bearing structure has high precision, not easy to damage.

Variable path length

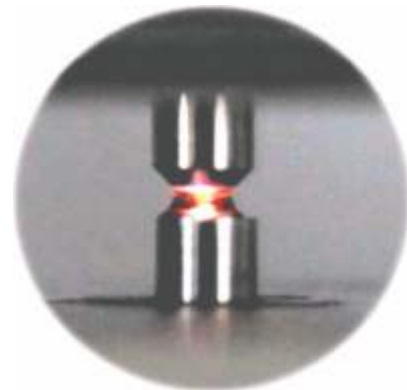
The mini. detection pathlength is 0.05mm; samples with high concentration can be detected directly without dilution.

The max. —15000ng/ pL dsDNA, the smallest detection volume of precious samples is 0.5

The user-defined settings are allowed if the pathlength is more than 1 mm. The instrument has flexible and convenient detection function.

Ultra wide wavelength range

With continuous wavelength range as 185-910nm, the instrument can detect various samples through selecting any band. It adapts to a variety of detection requirements with wide range of near infrared wavelength.



Note: Specifications are subject to change.

Tesca Technologies Pvt. Ltd.

IT-2013, Ramchandrapura Industrial Area, Sitapura Extension,
Near Bombay Hospital, Vidhani Circle, Jaipur-302022, Rajasthan, India,
Tel: +91-141-2771791 / 2771792; Email: info@tesca.in, tesca.technologies@gmail.com
Website: www.tescaglobal.com

ACCURATE PATHLENGTH

The stepper motor combined unique double track technology (DPTL), allows the precision of optical pathlength as 0.001mm, thus to achieve highly repeatability of absorbance detection.

CUVETTE DETECTION MODE

The cuvette detection mode comes with magnetic stirring function. User can set the heating function and stirring speed for dynamic analysis detection. And the user can define different pathlength, such as 1mm, 2mm, 5mm, 10mm. (for Model: FC-1100 only)

UNIQUE DESIGNED PIPETTE HOLDER FOR EASY SAMPLE ADDING

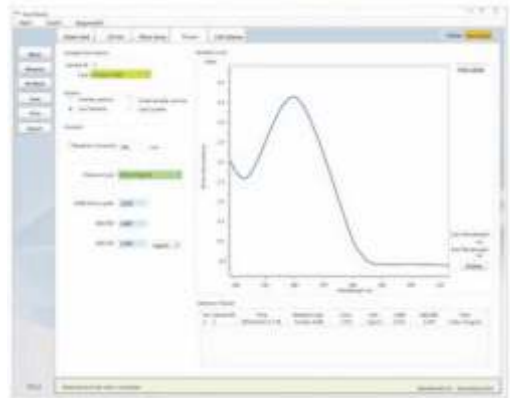
Auxiliary holder for adding liquid can ensure the accuracy of adding liquid during micro measurement. It is also suitable for other mainstream brands of microUV-Vis Spectrophotometer in the market to achieve a stable and simple process of adding liquid.

USER-FRIENDLY SOFTWARE

The simple designed interface makes the software user friendly. It will save the detection data and name file automatically, and it is easy to review the files. There is no need to worry about the loss of experimental data. Set U disk upgrade interface, and maintain the latest and most complete function at any time

WIRELESS CONNECTION

WiFi connected PAD to control the detection and results display and storage without need the cables. Dynamic detection realizes remote controlling and timing reading the results without manual intervention.



Note: Specifications are subject to change.

Tesca Technologies Pvt. Ltd.

IT-2013, Ramchandrapura Industrial Area, Sitapura Extension,
Near Bombay Hospital, Vidhani Circle, Jaipur-302022, Rajasthan, India,
Tel: +91-141-2771791 / 2771792; Email: info@tesca.in, tesca.technologies@gmail.com
Website: www.tescaglobal.com



MULTI-FUNCTIONS

- **Nucleic acid detection**

Built-in common calculation formula of dsDNA,ssDNA,RNA,Oligo-DNA,Oligo-RNA, can get the concentration and purity of samples automatically.

- **UV visible custom scanning**

In the full wavelength range, set the detected wavelength through increasing or decreasing wavelength with 1 nm as expected.

- **Protein detection**

Can detect the concentration of protein solution, or detect protein concentration of dye marker. Built-in common detection methods of BCA, Bradford, Lowry, Pierce 660nm.

- **Nucleic acid fluorescence marker detection**

Preinstall extinction factor of commonly used fluorescent dyes of dsDNA,ssDNA,RNA,Oligo-DNA,Oligo-RNA.

- **Cell detection**

Can detect absorbance value at 600nm automatically. Meanwhile, it can detect absorbance value at any band under set wavelength range.

TECHNICAL SPECIFICATION

| | | | |
|------------------------------|---------------------|---------------------------------------|-------|
| Detector | | 2048-element liner CCD array | |
| Mini.Sample Amount (ml) | | 0.5 | |
| Mini. Pathlength (mm) | | 0.05 | |
| Wavelength Range (nm) | | 185-910 | |
| Wavelength Accuracy (nm) | | ±1 | |
| Spectral Resolution (nm) | | 1.8(FWHMat Hg 253.7nm) | |
| Absorbance Accuracy | | 0.002 (1 mm optical length) | |
| Absorption Accuracy | | 3%(at 0.64A at 350nm) | |
| Limit of Detection | | 2ng/pl dsDNA | |
| Max. Detection Concentration | | 15000ng/ml dsDNA | |
| Detection Time | | <5 Sec. | |
| Cuvette Mode | Heating Temp.(°C) | 37±0.5 | null |
| | Mixing Speed (RPM) | 150-850 | null |
| | Optical Length (mm) | 10,5,2,1 | null |
| | Limit of Detection | 0.4ng/ml dsDNA | null |
| | Max. Detection | 750ng/ml dsDNA | null |
| Data Interface | | USB | |
| Wireless Connection | | Wifi | |
| Software Update | | USB direct update | |
| Accessory | | Pipette holder | |
| Power | | AC110V-220V 50HZ/60HZ (Power adapter) | |
| NET Weight | | 2.1KG | 2.0KG |

Note: Specifications are subject to change.

Tesca Technologies Pvt. Ltd.

IT-2013, Ramchandrapura Industrial Area, Sitapura Extension,
Near Bombay Hospital, Vidhani Circle, Jaipur-302022, Rajasthan, India,
Tel: +91-141-2771791 / 2771792; Email: info@tesca.in, tesca.technologies@gmail.com
Website: www.tescaglobal.com