


**Technical Specifications :-**

Size	65"
Product Size ( W x D xH )	1524mm x 99.06mm x 914mm
Backlight type	D-LED
Resolution	3840 x 2160
Brightness	450cd/m <sup>2</sup>
Contrast Ratio	5000:1
Display Colours	(10bit) 1.078 billion
Response Time	6ms
Refreshing Frequency	60Hz
Display Panel	LG A+ Grade
Display	0 Bonding
Viewing Angle	178 Degree
Display Led Life	50,000 hrs
Weight	46.1 Net we. ±1.6

Note: Specifications are subject to change, Photos shown above are Indicative, Actual Product can Vary.



Export Sales: +91-9829132777  
 India Sales: +91-9588842361



IT-2013, Ramchandrapura Industrial Area,  
 Sitapura Extension, Jaipur-302022, India.



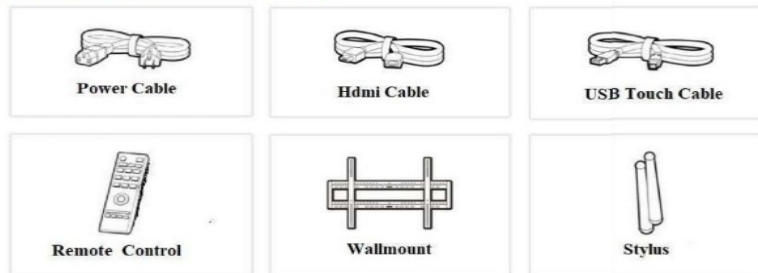
info@tesca.in  
 www.tescaglobal.com

**Operating System Specification:-**

Operating System Version	:Android 11.0
Chip set	:MSD8386
CPU	:Quad Core ARM A732+ A532
Working Freq.	:1.5GHz
GPU	:Mail G51
Ram Rom	:4 GB DDR4 + 32 GB
Windows Operating System (Optional)	:Windows 10
Installed Processors (Optional)	:Core i3 / i5 /i7
Installed Ram (Optional)	:8.00 GB DDR 4
Installed Rom (Optional)	:256 GB SSD
System Type (Optional)	:64-bit operating system, x64-basedprocessor
Sensing Type	:Infrared Fine Touch Technologies
Surface Protection	:9h Antiglare 4mm Toughened Glass
Touch Accuracy	:+/-1mm
Touch point	:20 Point
Audio Output	:2x20 W
Power Requirement	:AC 100 V – 240 V , 50/60 Hz
Power Computation without Ops	:140 W
Power Computation With ops	:180 W
Standby Condition	:<0.5 W
Ops Power	:DC 18V/5A
Operating Temperature	:0 = 40 c
Humidity	:20%- 80% RH Non – Condensing

**Features:-**

- Android 11.0 Operating System.
- 4K Ultra HD Resolutions.
- In-Built Play Store.
- Eye Care Protection Mode.
- 5G WI-FI and Bluetooth In-Built.
- HDMI, USB & TYPE-C Connectivity with Smart port.
- Support Wireless Casting Screen Share Android Windows and IOS Platform.
- Slot-in PC with Intel Core i5 CPU (Optional).
- In-Built Note Writing Software.
- Quick share through QR code.
- Storage with cloud option.

**Accessories in the Box**


Note: Specifications are subject to change, Photos shown above are Indicative, Actual Product can Vary.



Export Sales: +91-9829132777  
 India Sales: +91-9588842361



IT-2013, Ramchandrapura Industrial Area,  
 Sitapura Extension, Jaipur-302022, India.



info@tesca.in  
 www.tescaglobal.com