

Note: Specifications are subject to change, Photos shown above are Indicative, Actual Product can Vary.



Export Sales: +91-9829132777  
 India Sales: +91-9588842361



IT-2013, Ramchandrapura Industrial Area,  
 Sitapura Extension, Jaipur-302022, India.



info@tesca.in  
 www.tescaglobal.com

**Features:-**

- Compact Ergonomic Design.
- ISO Symbol for each mounted components User Friendly, Self Explanatory Systems.
- Leak proof Safety Measures, sturdy piping & Robust Construction.
- System Frame with Caster Wheel Arrangement for ease in movement.
- Inbuilt Safety Measures to avoid improper usage.
- Wall mounting assemblies of hydraulic actuator & self-reciprocating cylinder.
- Hydraulic motor (optional), Solenoid Valves (electro-hydraulic), Limit Switches.
- Proximity type sensors (electro-hydraulic), QRC Couplings provided Tubing /hose pipes for circulation of pressure.
- Manifold for distribution.
- Oil Hydraulic power pack for power supply.
- Optional components are available to allow fault operation and diagnosis training.
- Training literature – Instruction & operation manual, troubleshooting & maintenance tips will be provided in soft copy as well as hard copy format

**System Dimension:** 4 Ft. (L) X 2 Ft. ((W) X 6.5 Ft (H),

**Weight:** Approx: 190 Kg

**Services Required:** Electric supply 1 $\phi$  230 V AC, 6A, 50Hz / 3 $\phi$  supply of 415 V AC, 16A, 50Hz suitably used for direct on line starting of an induction motor.

*Note: Specifications are subject to change, Photos shown above are Indicative, Actual Product can Vary.*



Export Sales: +91-9829132777  
India Sales: +91-9588842361



IT-2013, Ramchandrapura Industrial Area,  
Sitapura Extension, Jaipur-302022, India.



info@tesca.in  
www.tescaglobal.com

**Technical Specification:-**

Item Name	Technical Specifications
Profile Plates & Stand-	The anodized Aluminum profile plate is the basis for training. All components fit securely & safely onto the profile plate with safe fixing arrangement. Grid Dimensions- 50mm, Size: 1000X700mm
Single Acting Cylinder-	Bore: 40 mm × Stroke: 75mm/100mm, Mounting: Foot.
Double Acting Cylinder-	Bore: 40 mm × Stroke: 75mm/100mm, Mounting: Foot.
Solenoid Valve-	2 Nos., 4/3 way 1/4" 24VDC & 4/2 way 1/4" 24VDC.
Hand Lever operated Valves-	2 Nos., 4/3 way 1/4" & 4/2 way 1/4"
Proximity Sensors-	Supply 24 V DC, 4 nos. Type: Inductive 3 wire, Diameter: 18 mm, Sensing Distance: 5 mm.
Pressure Gauge	Range- 100 Kg/cm <sup>2</sup> , Dial Size: 50/60 mm, Glycerin Filled.
Pressure Sequence Valve:-	1/4" (F), Square Body, 60kg/cm <sup>2</sup>
Oil Hydraulic power pack-	MS Powder Coated Oil Tank, Capacity: 25/30 Liters. With Oil Level Indicator, Breather , Filter , Suction & Drain Port Gear Pump: 3-5 LPM, 40/60 Bar, Breather, Oil filter & suction, Electric Motor- Single Phase, 230VAC / 3 Phase 415 V AC, 1/2 HP/ 1 HP, DOL starter.
P & T Manifold Block	4 ways, 1/4" Connection
Flow control valve	1/4" (F), Square body, Unidirectional
Check valve/NRV	1/4", Non return Valve
Relay, Three fold-	1 No., the device has three relays with terminals and two buses for power supply, Contact set – Single change-over switches, Contact load – maximum 5 A
Signal Input, Electrical-	1 No., The device contains an illuminated push-button switch (control switch) & two illuminated push buttons (momentary contact switches) with terminals & two buses for power supply. Contact set- 2 makes, 2 breaks, Contact load- max 1A.
Indicator & Distributor Unit, Electrical-	1 No. : The device contains an acoustic indicator and four lamps with terminals and three buses for power supply. Through-contact socket pairs per lamp allow the element to also be used as a Distributor.
Power Supply Unit-	1 No., Input Voltage: 230 VAC ,(47 - 63 Hz.), Output Voltage: 24 V DC, short circuit proof, output current: Max. 4.5 A, Connection Cable – 3m
Set of molded Cables-	1.5 Meter (2 core) - 4 No. 1.5 Meter (3 core) - 4 No. 1/1.5 Meter (1 core): Red- 04 Nos., Black- 04 Nos. BS5 Patch cords: Red - 4 Nos., Black - 4 Nos.
PLC panel (Optional)-	Siemens LOGO / Allen Bradley Micro 810/ Equivalent. DI/DO: 8DI/4DO
Hydraulic Motor (Optional)-	3 LPM, Flange mounting type.
Hydraulic Accumulator (Optional)	Capacity : 0.075 Liters, mWP bar: 250 bar Weight: 0.62 Kg, Connection: 1/2" BSP
Hose pipe with QRC	High quality Hose pipes:1/4",10nos.,QUICK RELEASE COUPLINGS( QRC) : 1/4",20 nos.
Meter-in Circuit & Meter Out Circuit	
Bleed-off Circuit	
Hydraulic Telescopic Cylinder (Optional)	
Limited Rotary Actuator (Optional)	
Pulley Arrangement to carry load applied to the actuator, i.e., Double Acting Cylinder (Optional)	
Hydraulic Simulation Software (Optional)	

Note: Specifications are subject to change, Photos shown above are Indicative, Actual Product can Vary.



Export Sales: +91-9829132777  
 India Sales: +91-9588842361



IT-2013, Ramchandrapura Industrial Area,  
 Sitapura Extension, Jaipur-302022, India.

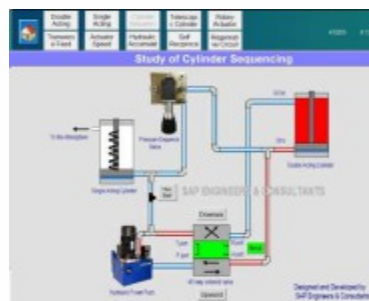
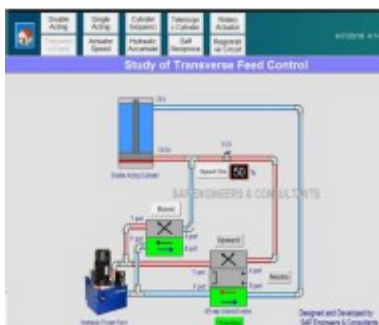
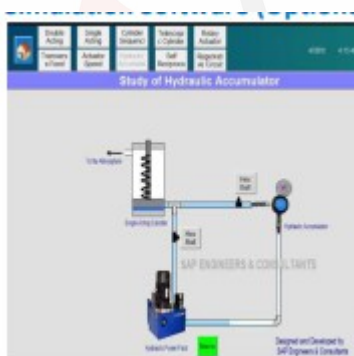


info@tesca.in  
 www.tescaglobal.com

**Range of Experiments:-**

- Study of fundamental principles of Hydraulics & its applications.
- Study of different hydraulic valves.
- Study of Pressure Relief valve (Pressure Control )
- Study of Direction control Valves( Hand Lever operated)
- Study of Direction control Valves (Electrically/Solenoid operated)
- Study of Flow control valve - Meter-in circuit,
- Study of Meter-out circuit
- Study of Bleed-off circuit.
- Study of Transverse & Feed Circuit
- Study of control of operation of Single acting Cylinder
- Study of control of operation of Double acting Cylinder
- Study of power pack control characteristics.
- Study of sequencing of two cylinders using Pressure sequence valve.
- Study of operation electro-hydraulic control.
- Study of sequencing operation of two cylinders using electro-hydraulic components.
- Study of operation Regenerative circuit.
- Study of operation Hydraulic Motor (Optional).
- Study of operation Hydraulic Accumulator (Optional).
- Study of operation of Telescopic Cylinder (Optional).
- Study of operation of Limited Rotary Actuator (Optional).
- Study of operation of Simulation software (SCADA) (Optional).

**Software Simulation(optional):-**



Note: Specifications are subject to change, Photos shown above are Indicative, Actual Product can Vary.



Export Sales: +91-9829132777  
 India Sales: +91-9588842361



IT-2013, Ramchandrapura Industrial Area,  
 Sitapura Extension, Jaipur-302022, India.



info@tesca.in  
 www.tescaglobal.com