



Note: Specifications are subject to change, Photos shown above are Indicative, Actual Product can Vary.



Export Sales: +91-9829132777  
 India Sales: +91-9588842361



IT-2013, Ramchandrapura Industrial Area,  
 Sitapura Extension, Jaipur-302022, India.



info@tesca.in  
 www.tescaglobal.com

**Features:-**

- Function & identification of Electro
- Direct and indirect manual controls, stroke dependant controls, time dependant and
- dependant controls with time delay, pressure sequence valves.
- Design & function of a electro
- Functional diagrams.
- Logic AND/OR function to start signals.
- Application and fault findings of Electro Pneumatic controls.
- Pneumatic power section – Electric control section.
- To empower students to design their own circuits.
- The kit is modular and upgradeable.
- Training literature – Instruction & operation manual , troubleshooting & maintenance tips will be
- provided in soft copy as well as hard copy format

**System Dimension:** 4 Ft. (L) X 2 Ft. ((W) X 6.5 Ft (H),

**Weight:** Approx: 110 Kg

**Services Required:** Compressed clean, dry air supply at 4-5 kg/cm<sup>2</sup> , Electric Supply of 1φ 230 VAC, 6A, 50Hz.

*Note: Specifications are subject to change, Photos shown above are Indicative, Actual Product can Vary.*



Export Sales: +91-9829132777  
India Sales: +91-9588842361



IT-2013, Ramchandrapura Industrial Area,  
Sitapura Extension, Jaipur-302022, India.



info@tesca.in  
www.tescaglobal.com

**Technical Specification:-**

Item Name	Technical Specifications
A]Profile Plates & Stand- B]Pneumatic Workstation	The anodized Aluminum profile plate is the basis for training. All components fit securely & safely onto the profile plate with safe fixing arrangement ,Grid Dimensions: 50mm, Size: 1000 ×700mm With MS Legs and one pedestal Drawer unit having 4 drawers each with handles & individual locks, on metallic full panel drawer slide: 1. Work Table – Size Approx. L1200mmxW600mm with four castor wheels including two lockable wheels at front 2. Drawer – size Approx – L460mmxW495mmxH158mm each & overall Size of drawer unit (Approx.)- L470mmxW495mmxH825mm 3. Drawer Slide Height (Approx.)-85mm
Shuttle Valve (OR)-	Make: JELPC/Eqvt 1 No., The Shuttle Valve is switched through to the output by applying compressed air to one of the inputs (OR) function. Design type is OR gate (shuttle valve). Pressure range: (1-10 Bar)
Dual Pressure Valve (AND)-	Make: JELPC/Eqvt 1 No., the dual-pressure Valve is switched through to the output by applying compressed air to both the inputs (AND) Function. Design type is AND Gate (Dual Pressure Valve). Pressure Range: (1-10 Bar)
One way flow Control Valve Assembly-	Make: JELPC/Eqvt 1 No., the One - way flow control valve is a combination of flow control valve & a non-return valve. The cross section of the restrictor can be set by means of a Knurled screw. Design type is combined flow control Valve. Pressure range – (0.5-10 Bar)
Pressure Sequence Valve assembly-	Make: JELPC/Eqvt 1 No., The pressure of the control signal can be set by means of the pressure setting screw (variable). Design type is Poppet Valve with return spring, Operating Pressure range – (1.8 – 8 bar). Control Pressure range - (1 – 8 bar)
Single Acting Cylinder-	1 No. : Design type is Piston Cylinder. Operating Pressure 10 bar. Stroke length–
Double Acting Cylinder-	1 No. Design – Piston Cylinder. Operating Pressure – 10 bar, Stroke Length – Max 100 mm
Manifold Assembly-	1 No., Manifold with 6 (2 ×3) Hex-Ball Valve. A common manifold for plastic tubing allows supply of compressed air to the control via six individual ports (for plastic tubing PUN 4×0.75)
Filter regulator with Gauge-	Filter control valve with pressure gauge, gate valve, quick push-pull connectors & quick couplings mounted on a swivel support. The filter with water separator removes dirt, pipe sinter, rust & condensed water. The pressure control valve regulates the supply. Air pressure to the set operating pressure & compensates pressure fluctuations. The filter bowl has a condensate drain valve. The shutoff valve ventilates & vents entire control. Input pressure –Maximum (16 bar),Output pressure – Max 12 bar, grade of filtration– 40 mm approx., Connector – G 1/8 , / PU 4
Relay, Three fold-	1 No., the device has three relays with terminals and two buses for power supply. Contact set – Single change-over switches, Contact load – maximum 5 A
Signal Input, Electrical-	1 No., The device contains an illuminated push-button switch (control switch) & two illuminated push buttons (momentary contact switches) with terminals & two buses for power supply. Contact set- 2 makes, 2 breaks, Contact load- max 1A.
Indicator & Distributor Unit, electrical-	1 No., The device contains an acoustic indicator and four lamps with terminals and three buses for power supply. Through-contact socket pairs per lamp allow the element to also be used as a Distributor.
Proximity switch with attachment-	2 No. : The Proximity switch consists of a sensor, the mounting kit and the cable. This proximity switch gives a signal when it detects a metal. The status is indicated by an LED. Switching Voltage – 24 VDC, Switching current – max. 200 mA, Switching Power – 6 W approx, switching accuracy - ±0.1mm
Equipment Tray-	1 No., MS powder coated tray with slots for placing components to be supplied with Electro-pneumatic supplementary kit.

Note: Specifications are subject to change, Photos shown above are Indicative, Actual Product can Vary.



Export Sales: +91-9829132777  
India Sales: +91-9588842361



IT-2013, Ramchandrapura Industrial Area,  
Sitapura Extension, Jaipur-302022, India.



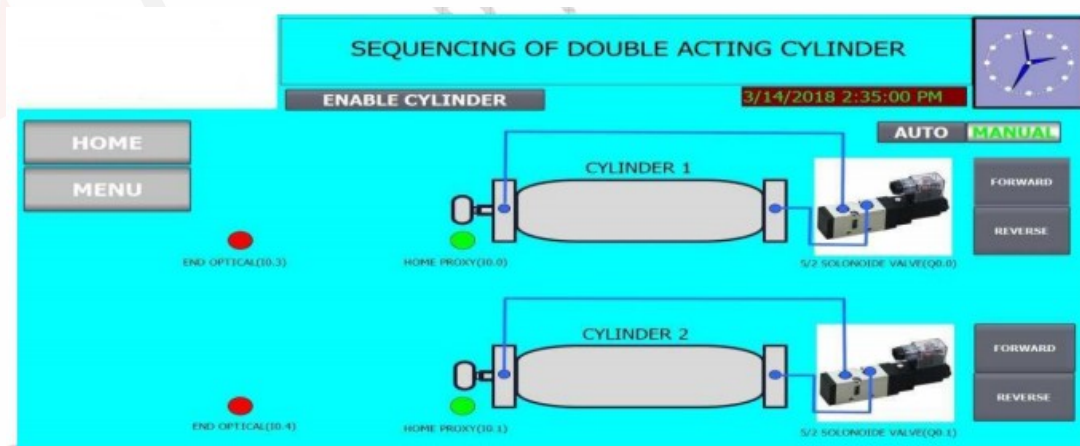
info@tesca.in  
www.tescaglobal.com





**Range of Experiments:-**

- Study of Advanced Electro – Pneumatic Trainer.
- Study of Self Reciprocation of Single Acting Cylinder by Using Electric Limit Switch & 3/2 Solenoid Valve
- Study of Self Reciprocation of Double Acting Cylinder by Using Proximity Switch & 5/2 Double Sided S.V.
- Study of Self Reciprocation of Double Acting Cylinder by Using Proximity Switches & 5/2 Single Sided S.V.
- Study of AND Valve (Dual Pressure Valve)
- Study of Shuttle Valve (OR Valve)
- Study of Quick Exhaust Valve
- Study of operation of Hand Lever Valve (3/2 & 5/2 DCV)
- Study of operation Of 5/2 Push Button Valve
- Study of operation Of 3/2 Single Pilot Operated Valve
- Study of Pressure Sequence Valve
- Study of Flow Control Valve & Pneumatic Motor Study of P To E Converter Study of using Signal Input Electrical B
- Study of Pneumatic & Electro-Pneumatic Circuits.
- Study of PLC Based cylinder position sensing &
- Study of Time Delay Valve (optional)
- Study of Electronic Timer (Optional)
- Study of Operation of Pneumatic Simulation Software (SCADA) (optional).

**Software Simulation(optional):-**


Note: Specifications are subject to change, Photos shown above are Indicative, Actual Product can Vary.



Export Sales: +91-9829132777  
India Sales: +91-9588842361



IT-2013, Ramchandrapura Industrial Area,  
Sitapura Extension, Jaipur-302022, India.



info@tesca.in  
www.tescaglobal.com