



### Technical Specifications :-

The intended item is designed and fabricated based on the illustrative reference diagrams shown. The item has to be installed, tested and commissioned as a low voltage switchboard training system.

The 3-Phase, 400V, 50Hz Low Voltage Switchboard Training System comprise of the following:

- Metal Structure of approximate dimensions: H2030mm x W2000mm x D1050mm
- Covers and Doors with bonding wire
- Compartments
- Incoming and Outgoing LED Indicator Lamps
- Automatic Transfer Switch of appropriate capacity
- Incoming Withdrawable Air Circuit Breaker of appropriate capacity
- Overcurrent and Earth Fault Protection Relays
- Digital Voltmeter
- Digital Ammeter
- Power Meters
- Outgoing Moulded Case Circuit Breakers of appropriate capacity
- Variable Resistive Load Bank (External unit – integrated)
- Variable Inductive Load Bank (External unit – integrated )
- Power Factor Correction Unit with capacitor banking (External unit – integrated)
- As built switchboard layout drawing and single line drawing will be provide with panel
- The different resistive inductive and capacitive loads are to be connected such that the smart meters can read the power factor, energy, voltage and current.
- The Power factor correction unit is integrated into the design of the smart switchboard to perform power factor correction. There should be Proper isolation and protection for the capacitance banks
- All components used are of reputed brands to ensure quality and reliability
- 3-phase, 400V, 50Hz all items of suitable rating for the above voltage

Note: Specifications are subject to change, Photos shown above are Indicative, Actual Product can Vary.



Export Sales: +91-9829132777  
India Sales: +91-9588842361



IT-2013, Ramchandrapura Industrial Area,  
Sitapura Extension, Jaipur-302022, India.

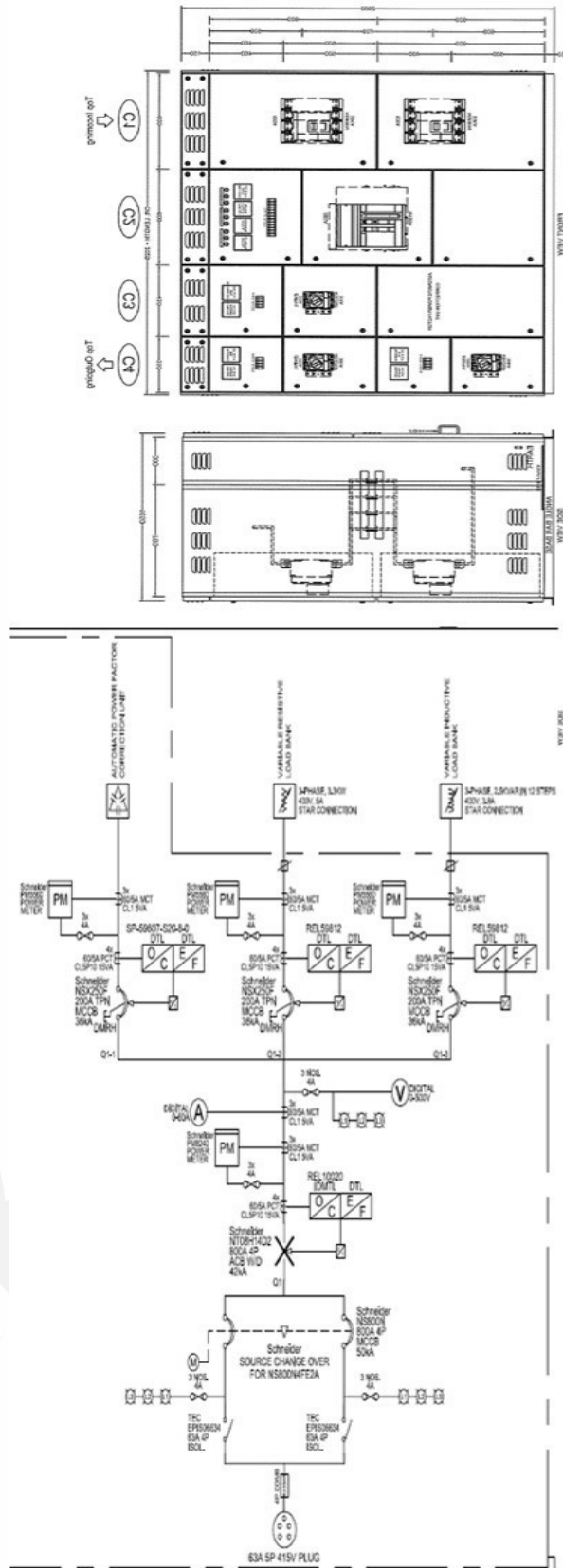


info@tesca.in  
www.tescaglobal.com



Order Code – 23246671.18  
 LV Smart switchboard with  
 automatic power factor correction

Reference :-



Note: Specifications are subject to change, Photos shown above are Indicative, Actual Product can Vary.



Export Sales: +91-9829132777  
 India Sales: +91-9588842361



IT-2013, Ramchandrapura Industrial Area,  
 Sitapura Extension, Jaipur-302022, India.



info@tesca.in  
 www.tescaglobal.com

